

## The TITV-Heating System for the Integration into Clothing

### 1. Modular configuration

Depending on the application a different number of heating pads can be used. The heating area of one or all pads averages up to 700 cm<sup>2</sup>.

### 2. Variable pad layout

The heating pads can be manufactured in any demanded layout.

### 3. Washable

The use of textile heating elements allows you to wash the heating pads.



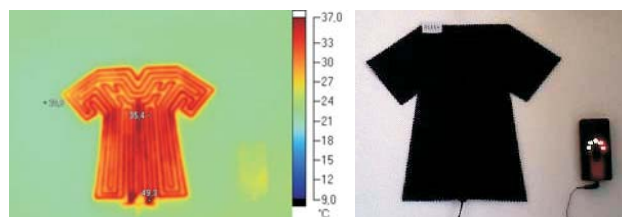
### Technical Data

Base material:	PES non-woven
Heating element:	ELITEX®-I (isolated conductive PA threads)
Temperature area:	30 to 50°C , depending on heat level, size of the pad, controlling, energy level
Heat period:	2 to 4 hours
Energy supply:	Li-Ionen battery
Controlling:	compatible to the control unit of Texsys GmbH 3,5 mm phone jack (3-pin)
Care:	Washable at 40°C machine wash not suitable for dryer use

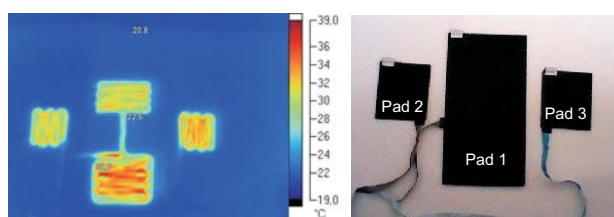


### Sample configuration (individual layout on request)

Dimensions (lxw) in cm		Area in cm <sup>2</sup>	Temperature area
1 Pad-System	27 x 24	648	35-38°C



3 pad system			
Pad 1:	25 x 16	400	37-40°C
Pad 2 + 3:	10 x 10	100	30-33°C



### Contact:

**Dirk Zschenderlein**  
Phone.: +49 (0) 3661/611-203  
d.zschenderlein@titv-greiz.de